

PETERSBURG, VIRGINIA

AL-5664 (FAA)

RNAV (GPS) RWY 23

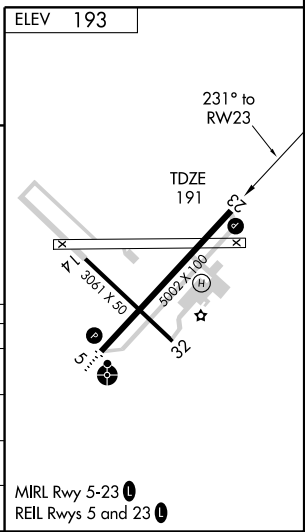
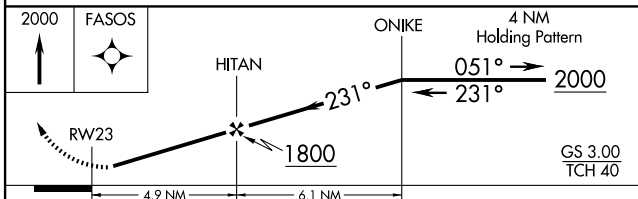
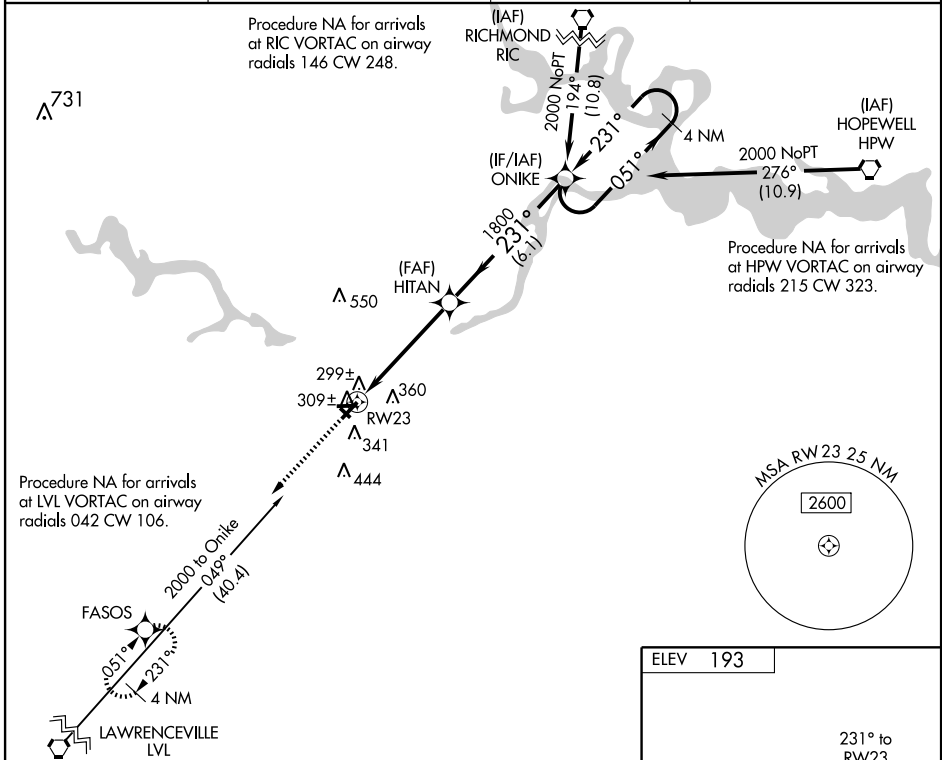
PETERSBURG / DINWIDDIE COUNTY (PTB)

WAAS CH 86706 W23A	APP CRS 231°	Rwy Idg TDZE 191 Apt Elev 193	5002
--	------------------------	---	-------------

▼ For uncompensated Baro-VNAV systems, LNAV/VNAV NA below -1.5°C (5°F) or above 54°C (130°F). DME/DME RNP-0.3 NA. When local altimeter setting not received, use Chesterfield County altimeter setting and increase all DAs/MDAs 40 feet. LPV and LNAV/VNAV all Cats visibility ¼ mile and LNAV Cat C ½ mile. Visibility reduction by helicopters NA.

MISSED APPROACH: Climb to 2000 direct FASOS and hold.

AWOS-3 133.325	POTOMAC APP CON 134.7 307.2	GCO 135.075	UNICOM 122.7 (CTAF) 0
--------------------------	---------------------------------------	-----------------------	---------------------------------



CATEGORY	A	B	C	D
LPV DA	499-1	308 (400-1)		NA
LNAV/VNAV DA	644-1½	453 (500-1½)		NA
LNAV MDA	560-1	369 (400-1)		NA
CIRCLING	660-1	467 (500-1)	660-1½ 467 (500-1½)	NA

PETERSBURG, VIRGINIA
Amdt 1 09127

37°11'N - 77°30'W

RNAV (GPS) RWY 23

NE-3, 17 DEC 2009 to 14 JAN 2010

NE-3, 17 DEC 2009 to 14 JAN 2010