

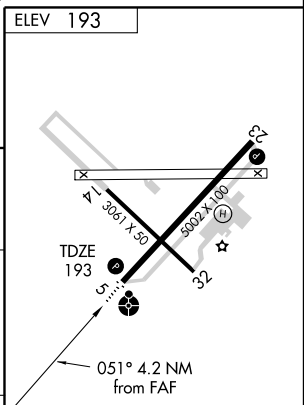
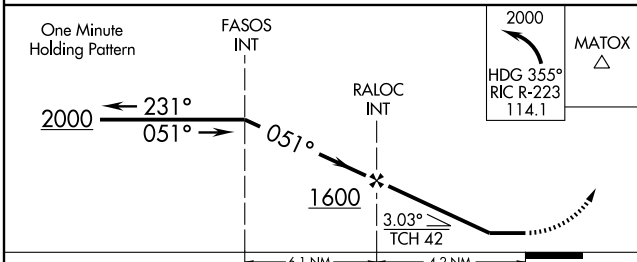
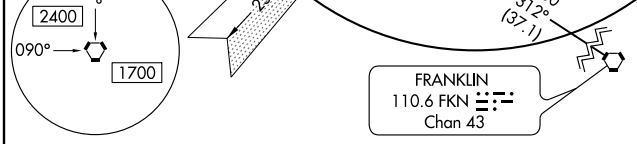
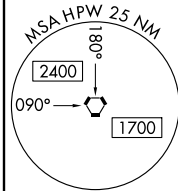
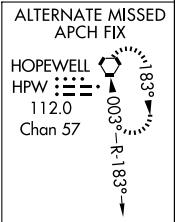
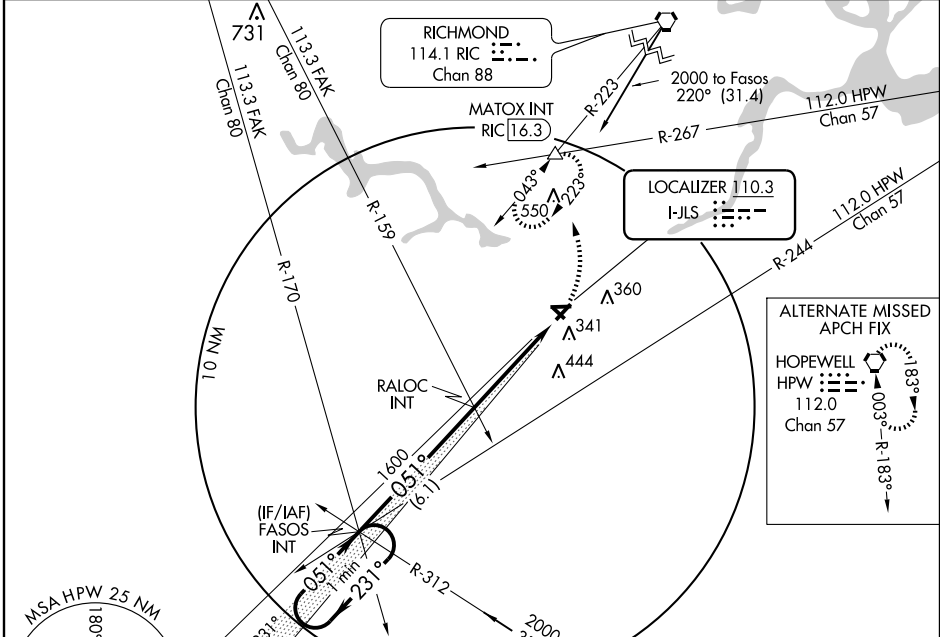
LOC RWY 5

PETERSBURG / DINWIDDIE COUNTY (PTB)

LOC I-JLS 110.3	APP CRS 051°	Rwy Idg 5002
		TDZE 193
		Apt Elev 193

<p>NA Inoperative table does not apply to S-5 Cat C. When local altimeter setting not received, use Chesterfield County altimeter setting and increase all MDAs 40 feet and Cat C visibility 1/4 mile.</p>	<p>ODALS</p> <p>MISSED APPROACH: Climbing left turn to 2000 via heading 355° and RIC R-223 to MATOX Int/RIC 16.3 DME and hold.</p>
---	---

AWOS-3 133.325	POTOMAC APP CON 134.7 307.2	GCO 135.075	UNICOM 122.7 (CTAF) 0
--------------------------	---------------------------------------	-----------------------	---------------------------------



CATEGORY	A	B	C	D
S-5	680-3/4 487 (500-3/4)		680-1 1/4 487 (500-1 1/4)	NA
CIRCLING	680-1 487 (500-1)		680-1 1/2 487 (500-1 1/2)	NA

MIRL Rwy 5-23				
REIL Rws 5 and 23				
FAF to MAP 4.2 NM				
Knots	60	90	120	150 180
Min:Sec	4:12	2:48	2:06	1:41 1:24

LOC RWY 5

NE-3, 17 DEC 2009 to 14 JAN 2010

NE-3, 17 DEC 2009 to 14 JAN 2010