

# VOR RWY 23

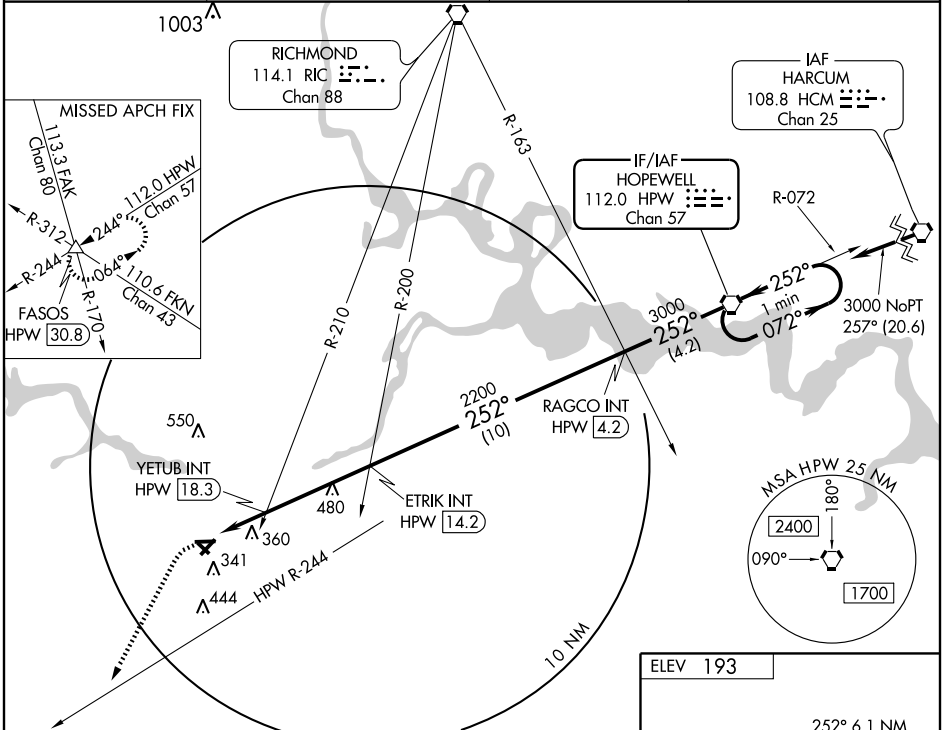
PETERSBURG / DINWIDDIE COUNTY (PTB)

VORTAC HPW <b>112.0</b> Chan <b>57</b>	APP CRS <b>252°</b>	Rwy Idg TDZE Apt Elev <b>5002</b> <b>192</b> <b>193</b>
--	------------------------	--

**▼** Visibility reduction by helicopters NA.  
**▲** When local altimeter setting not received, use Chesterfield County altimeter setting and increase all MDAs 40 feet.

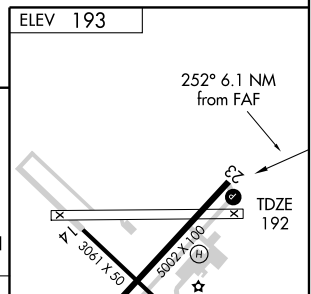
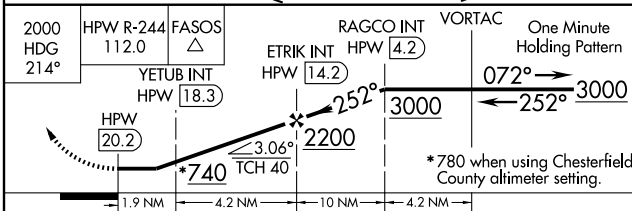
MISSED APPROACH: Climb to 2000 via heading 214° and HPW R-244 to FASOS INT/HPW 30.8 DME and hold.

AWOS-3 <b>133.325</b>	POTOMAC APP CON <b>134.7 307.2</b>	GCO <b>135.075</b>	UNICOM <b>122.7</b> (CTAF) <b>0</b>
--------------------------	---------------------------------------	-----------------------	--



NE-3, 17 DEC 2009 to 14 JAN 2010

NE-3, 17 DEC 2009 to 14 JAN 2010



CATEGORY	A	B	C	D
S-23	740-1 548 (600-1)	740-1¼ 548 (600-1¼)	740-1½ 548 (600-1½)	NA
CIRCLING	740-1 547 (600-1)	740-1¼ 547 (600-1¼)	740-1½ 547 (600-1½)	NA
YETUB FIX MINIMUMS (DUAL VOR RECEIVERS OR DME REQUIRED)				
S-23	620-1 428 (500-1)	620-1¼ 428 (500-1¼)	620-1½ 428 (500-1½)	NA
CIRCLING	660-1 467 (500-1)	660-1¼ 467 (500-1¼)	660-1½ 467 (500-1½)	NA

MIRL Rwy 5-23 <b>0</b> REIL Rwys 5 and 23 <b>0</b>					
FAF to MAP 6.1 NM					
Knots	60	90	120	150	180
Min:Sec	6:06	4:04	3:03	2:26	2:02